



PALLISERS
OF HEREFORD LIMITED

YOUR LOCAL DEALER



A MESSAGE FROM THE PALLISER FAMILY

As we move further into another year, I'd like to take a moment to sincerely thank you for your continued support - not only over the past year, but also throughout this one. Business is always a journey, and we truly hope you're happy with the service you've received from us.

Last year, we were proud to celebrate a major milestone, 30 years in business. To mark the occasion, we hosted a special event for team members past and present. It was a fantastic evening, a chance to bring everyone together, and one that reminded us just how much we've achieved as a team. We feel incredibly proud and grateful to have reached 30 years. We owe the success to our dedicated staff past and present, who gave their all in everything we do- they are without a question the reason we're still here and standing stronger than ever.

We've had an exciting start to the year, and we're thrilled to share some fantastic news. We've recently been awarded a new territory in Worcestershire for Kubota, which marks a significant step forward for our business. This growth means even more opportunities for us to support farmers and contractors with high-quality machinery and trusted service.

Over the past 12 months, the farming industry has faced significant challenges. One of the most pressing issues is the proposed changes to inheritance tax, which could have serious implications for farming families when enforced. On top of this, farmers are battling ongoing problems with unpredictable weather, cheap imports undermining local produce, and misleading food labelling. Despite these pressures, we continue to see the incredible resilience, focus, and determination of those in the farming community to protect the future of their work. We are truly grateful for your continued trust in us during such challenging times.

We look to the year with optimism, and we're proud to continue standing with our customers, and we hope that this year is kind to you all.

Camilla Palliser



DID YOU KNOW

TOP AMAZONE
MOUNTED
SPRAYER DEALER
IN THE UK *



WE CARRY 1.8
MILLION POUNDS
WORTH OF PARTS



WE HAVE 6 ORIGINAL
STAFF MEMBERS WHO
HAVE BEEN WITH US
SINCE WE STARTED, ANNA
PALLISER, NEIL LLOYD,
PHIL PORTMAN, KEN
PARSONS, JONNY WALT &
BRIAN WILLIAMS



WE ARE ONE
OF SDFS
LARGEST UK
DEALERS



WE ARE IN OUR
31ST YEAR OF
BUSINESS



WE HAVE 10 SERVICE
ENGINEERS, TO BE 13
IN SEPTEMBER AND 8
SERVICE VEHICLES ON
THE ROAD



Marshall IN STOCK



QM-14 SILAGE / GRAIN TRAILER

Sprung drawbar, air brakes, hydraulic door, LED lights, in Gun Metal Grey.



S-4 DROP SIDE TRAILER

WILL BE IN GUN METAL GREY, 10.0 X 15.3 wheels, hydraulic brakes, lights, hydraulic tipping.



28 FT BALE FLAT BED TRAILER

WILL BE IN GUN METAL GREY, Hydraulic & air, brakes, sprung drawbar, front & rear hay ladders, strap box, 8 stud axles - tyres 400R 60 22.5



26 FT LOW LOADER TRAILER

IN GUN METAL GREY, Hydraulic & air brakes, sprung drawbar.

REQUEST PRICING FROM OUR SALES TEAM

YOUR AFTERSALES TEAM



DAVE
WORKSHOP MANAGER

He loves what he does – from working closely with farmers to staying at the forefront of the ever-evolving agricultural industry. He thrives in the fast-paced environment of our busy workshop and takes pride in leading a team of ten skilled mechanics. Every day brings new challenges and opportunities, and that's exactly what keeps him motivated and passionate about his role.



BECOME AN APPRENTICE

We are always on the lookout for enthusiastic people to join our service team as an apprentice. Hear what recent apprentice Jake said about his experience: "My apprenticeship at Pallisers has been an incredibly valuable experience, providing hands-on learning that I've thoroughly enjoyed every step of the way."

Contact camilla.palliser@pallisers.co.uk to chat further



KATE
PARTS MANAGER

Kate has been a valued member of the team for over 20 years. She began her journey with us in purchasing and administration, and over the past three years, she has excelled in her role as Parts Manager. Kate plays a key part in keeping the workshop running smoothly, from managing parts to supporting the team by answering calls and assisting wherever needed. She loves working within the agricultural industry and the variety her role brings. When she's not at work, you'll find her lending a hand on the family farm at home.



**DEUTZ
FAHR**

5 SERIES | 95-126 HP THE STOCKMANS TRACTOR

- ✓ 3-4 CYLINDER ENGINE
- ✓ HML TRANSMISSION
- ✓ 5,400 KG REAR LIFTING CAPACITY
- ✓ 90 L/MIN CCLS HYDRAULIC SYSTEM

IN STOCK >>>>>>>>



**0%
FINANCE
AVAILABLE**

**NEW
OFFER**



5105 KEYLINE | 75-106 HP ALL-ROUNDER UTILITY MID-TRACTOR.

- | | |
|------------------------|-------------------------|
| ✓ AIR CON | ✓ PASSENGER SEAT |
| ✓ HIGH VIS | ✓ 420/70R24 – 480/70R34 |
| ✓ 40 X 40 - 2 SPEED PS | ✓ 'EASY LIFT' |
| ✓ FULL LOADER READY | |

**ON
FARM
FROM
£45K**

YOUR SALES TEAM

AGRICULTURE



JAMIE BLANDFORD

West Herefordshire & Wales

07795 978 610

jamie.blandford@
pallisers.co.uk

Favourite Machine(s):

Merlo 33.7 & Kubota
M7-173 KVT



PHIL PORTMAN

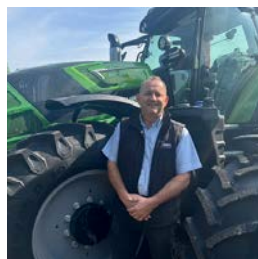
South Herefordshire & Gloucestershire

07970 754 597

phil.portman@
pallisers.co.uk

Favourite Machine(s):

Amazona UF2002 &
Krone BiGX



NEIL LLOYD

North & East
Herefordshire &
Worcestershire

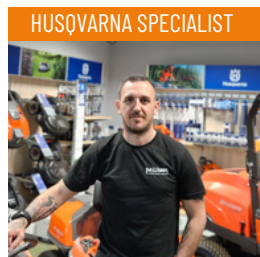
07974 949 547

neil.lloyd@
pallisers.co.uk

Favourite Machine(s):

Deutz 6135
Kubota RTV X1110

GROUND CARE



MATT WILKES

Herefordshire and
surrounding Counties

07869 660584

matt.wilkes@
pallisers.co.uk

Favourite Machine(s):

Husqvarna 430X Nera
and the Husqvarna
R214TC

FOR INFORMATION ON ANY OF
OUR MACHINERY, PLEASE
CONTACT OUR SALES TEAM

NEW/USED EQUIPMENT

POA
*PRE-SEASON
SERVICE
INCLUDED



KRONE BIGX 780

2018, 2866 engine hours, 2900 drum hours, Liebherr engine, Non Ad Blue, Easy Flow, 300 grass header.

£76,000
+VAT



DEUTZ FAHR AGROTRON 6165

2022, 700 hours, 165hp, 6 speed semi power shift, front axle suspension, 4 manual spool valves.

£31,500
+VAT



KUBOTA M4-073

2023, 1800 hours, aircon, air seat, rear fender extensions, auto hitch, power shuttle.

£22,950
+VAT



NEW KUBOTA L1-452 HST

2025, 45 hp, HST - hydrostatic transmission, independent PTO, power steering, 4WD.

£16,550
+VAT



KUBOTA M8540 NARROW

2012, air con, air seat, 3000 hours, 2x spool valve power shuttle.

£42,000
+VAT



MERLO TF42.7-140

2019 reg, 4500 hours, boom suspension, air con, pick up hitch, new tyres, pin and cone or Merlo headstock.

£48,500
+VAT



MERLO TF35.7CS-115

2020, approx 3600 hours, cab suspension, boom suspension, air con, Grammer air seat.

£45,000
+VAT



MERLO TF42.7CS-140

2020, 4600 hours, cab suspension, boom suspension, air con, pickup hitch.

£44,000
+VAT



MERLO TF35.7-115

2020, 4900 hours, boom suspension, Grammer air seat, pick up hitch and trailer brakes.



M6-132 | 153HP

- ✓ 4-CYLINDER ENGINE
- ✓ 24F/24R POWERSHIFT TRANSMISSION
- ✓ 7,000 KG REAR LIFTING CAPACITY
- ✓ 115 L/MIN CCLS HYDRAULIC SYSTEM

REQUEST A DEMO



CHECK OUT LANDPOWER TV'S
IN-DEPTH REVIEW OF THE M6002



In addition to Kubota's standard 2-year warranty; you can be further protected with a flexible extended warranty scheme; KUBOTA CARE.

GROWING A ROSY FUTURE

Having recently expanded into rose production, one Herefordshire nursery has opted for two Kubota M6-121 Utility tractors and an M4-063 to simplify planting and harvesting for its latest venture.

Wholesale flower grower and distributor Allensmore Nurseries has recently expanded its operation to include the production of roses.

For the last four years, the family-run business has been gearing up to produce 500,000 roses annually, grown on just 20 acres. This new venture has added diversity to its core business of supplying millions of plants to around 300 garden centres, DIY stores and supermarkets every year, which is achieved on the nursery's 200-acre site at Allensmore, Herefordshire.

"To support our fledgling rose operation, we needed to invest in additional tractors and equipment to carry out seedbed preparation, plus planting and harvesting," explained Allensmore Nurseries managing director Mark Taylor, pictured with son George.

"It was essential that we chose the right kit for the job." That kit includes a pair of M6-121 Utility models and a smaller M4-063, all supplied by Pallisers of Hereford.

In addition to general trailer work, the tractors are also required to carry out inter-row cultivation for mechanical weed control, plus power harrowing and topping – the latter to manage the growth of rootstocks, in preparation for grafting of multiple varieties onto the growing plants. "Everything we do is at a low forward speed, so having tractors with creeper gearboxes was a key consideration in our buying decision," he said. "We also have a pair of four-row planting rigs, and these are used with our two M6-121 Utility tractors."

Establishing the crop requires four operators to sit on each rig and manually load root stock onto the planting wheels. "This gives us a plant spacing of 12cm down each 90cm row," he said. "Once established, we can then mechanically top the plants, ahead of grafting the required varieties onto the healthy root stocks." George Taylor added that the mechanical simplicity of their three Kubota tractors means any of their field team workforce can hop on and off the tractors without the need for advanced training, which simplifies labour requirements at peak times.

"We don't run kit with a single operator," said George. "Having multiple operators increases availability and makes it easier to manage our workload. When we're rose planting, both M6's and planters run together, to get the crop in ground as quickly as possible." He says that the crop is kept in the ground for two years, before being lifted using an Egedal single row belt lifter, allowing plants to then be potted and placed on growing beds, in preparation for sale. "It's not a short-term investment, and this puts pressure on cash flow and resources," said George. "So it's important that the equipment we buy offers good value for money and is backed up by an extensive warranty, creating fixed operating costs for our business."





CATROS+ 4003-2

- ✓ IDEAL FOR FAST, SHALLOW INTENSIVELY MIXING SOIL TILLAGE
- ✓ 4M WORKING WIDTH
- ✓ HYDRAULIC FOLDING
- ✓ HYDRAULIC DEPTH CONTROL

REQUEST A DEMO

MERLO

35.7

- ✓ 140HP
- ✓ 3,500 KG LIFT CAPACITY
- ✓ 7M LIFT HEIGHT
- ✓ AIR CONDITIONING

AVAILABLE TO DEMO NOW

**Finance subject to T&C's.*



**0%
FINANCE
AVAILABLE***

**1-2
ANNUAL
PAYMENTS**

KRONE

**£8,150
+VAT**



KRONE ACTIVEMOW R 280

2.83m working width, side-mounted mower, quick change blades, SafeCut, SmartCut.

**£7,150
+VAT**



KRONE VENDRO 560

5.60m working width, 4 rotor tedder, compact V-shaped frame, OptiTurn tines lift and spread the crop in an ideal way

**£6,650
+VAT**



KRONE SWADRO S 380

3.80m working width, single rotor rake, side delivery.



PARTS OFFERS



TENOSPIN WRAP

£72 +VAT PALLET RATE (15 ROLLS)

£74 +VAT PER ROLL



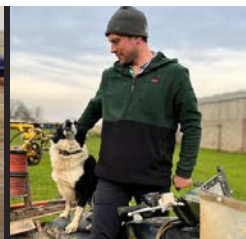
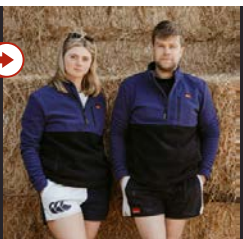
PICK UP IN STORE...



SHOP NOW



AGRICULTURAL WORKWEAR
& FARMING APPAREL
AVAILABLE AT PALLISERS



YETI®

SHOP THE COLLECTION
NOW IN OUR STORE



LEASE FROM
£50.00
PER MONTH



AUTOMOWER® 315

1,500m² working area capacity, up to 40% max slope performance.

£968.33 PLUS VAT

EXCLUDING INSTALLATION

LEASE FROM
£55.99
PER MONTH



AUTOMOWER® 315 II

1,500m² working area capacity, up to 40% max slope performance.

£1,244.35 PLUS VAT

EXCLUDING INSTALLATION

LEASE FROM
£56.99
PER MONTH



AUTOMOWER® 405X

1,500m² working area capacity, up to 40% max slope performance.

£1,244.31 PLUS VAT

EXCLUDING INSTALLATION

LEASE FROM
£65.99
PER MONTH



AUTOMOWER® 415X

1,500 m² working area capacity, 40 % max slope performance.

£1,597.02 PLUS VAT

EXCLUDING INSTALLATION

LEASE FROM
£79.00
PER MONTH



AUTOMOWER® 430X

3200 m² working area capacity, up to 45% max slope performance.

£1,624 PLUS VAT

EXCLUDING INSTALLATION

LEASE FROM
£89.00
PER MONTH



AUTOMOWER® 450X

5000m² working area capacity, 45% max slope performance.

£2,378 PLUS VAT

EXCLUDING INSTALLATION

LEASE FROM
£120.00
PER MONTH



AUTOMOWER® 520

2,400 m² working area capacity, 45 % max slope performance.

£1,548.19 PLUS VAT

EXCLUDING INSTALLATION

LEASE FROM
£175.00
PER MONTH



AUTOMOWER® 550

5000m² working area capacity, 45% max slope performance.

£2,454.50 PLUS VAT

EXCLUDING INSTALLATION

PERFECT FOR STRIPES!



AUTOMOWER® 430X NERA

3200 m². working area capacity, 50 % max slope performance.

£3,595 PLUS VAT

EXCLUDING INSTALLATION

**HYDROSTATIC
OPTION
AVAILABLE**



KUBOTA EKT-261

3-cylinder diesel engine, 24.8hp, 5 year/ 1500 hour Kubota Care 5 Warranty as Standard.

**NOW £9,750
PLUS VAT**



KUBOTA GR1600

13.5hp, hydrostatic, 42" cutting width, collector.

**NOW £8,500
PLUS VAT**



KUBOTA GR2120

13.5hp, hydrostatic, 42" cutting width, mulching deck.

**NOW £12,500
PLUS VAT**



KUBOTA Z1-421

18hp, hydrostatic, 42" cutting width, side discharge.

**NOW £4,750
PLUS VAT**



KUBOTA Z2-481

21.8hp, hydrostatic, 48" cutting width side discharge.

**NOW £6,995
PLUS VAT**



In October 2024, David Palliser, founder of Pallisers of Hereford, passed away. His death is a great loss to us all, family, colleagues, friends and customers. He is missed so very much. We want to thank everybody for their kind messages and support.

01432 890 300



SALES@PALLISERS.CO.UK