



PALLISERS

OF HEREFORD LIMITED

YOUR LOCAL DEALER



A MESSAGE FROM THE PALLISER FAMILY

As always, I'd like to personally thank you for your continued support over the past year. Your loyalty means a great deal to us as a family business and is never taken for granted.

2025 was a very positive year for Pallisers. I really enjoyed getting out to shows and events and having the opportunity to catch up with so many of you in person, those conversations are always a highlight for both myself and the team.

We also recognise that last summer brought its own challenges, with particularly dry conditions in many areas leading to shortages of grass and forage. We know this put added pressure on many farming businesses, and we are hopeful that the 2026 season brings more favourable growing conditions.

This year brings some exciting developments for the business. We have taken on the additional depot next door to our existing site, effectively doubling our footprint. This is a significant step forward and will allow us to improve efficiency, increase our stock holding, and continue to build on the service we provide.

We are also pleased to be expanding our product offering. We have taken on Nugent Trailers, a well-respected, family-run manufacturer that fits very well with our business. This allows us to offer a strong range of trailers for livestock, plant and construction.

Alongside this, we are introducing Hustler Equipment, which will further strengthen our offering within the livestock sector, providing reliable and efficient feeding solutions.

Our team continues to grow with the business. We now have 12 skilled mechanics supported by two apprentices, with another two apprentices joining us in September. We are continuing to invest in both our facilities and our people to ensure we maintain the level of service our customers expect.

Many of you will know Tom from our parts department, where he has been with us for the past four years. I'm pleased to say Tom is now moving into a sales role, where he will be focusing on Nugent Trailers and Husqvarna. This is a great step for him and a positive move for the business, helping us further strengthen our support for customers, particularly within the livestock sector.

Overall, 2026 is very much about continuing to grow the business, investing where needed, and making sure we are supporting our customers in the right way.

Thank you again for your continued business. I look forward to seeing many of you over the coming year, whether at the depot or at shows please do come and say hello.

Camilla Palliser





YOUR ONE-STOP-SHOP

Our doors are always open at the Hereford yard! Pop into our depot to explore the latest premium machinery line-up, browse our fully stocked parts counter, or simply catch up with the team over a coffee.

Whether you need an essential component to keep you moving or want to talk track with our sales team, a warm welcome always awaits you.



**SAFETY BOOTS
£87+VAT**

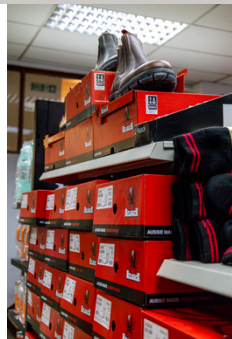
**NON SAFETY
£82.40+VAT**



YETI

YETI BOX SPECIAL OFFER
ROADIE 15 £150 INC VAT
ROADIE 24 £200 INC VAT

CHROME ANY THREE PRODUCTS FOR £15>>>



**LATEST
NEWS**



**NUGENT
TRAILERS**

WE ARE NOW NUGENT DEALERS!

£5,450
+VAT



14" X 6" FLATBED TRAILER

Dropsides, lashing points. LED lights, lockable ramp compartment.

£1,700
+VAT



7" X 4" UTILITY (LAMB TRAILER)

Full ramp and lamb door, lamb divider, side extensions, spare wheel kit.

£8,950
+VAT



12" X 6" LIVESTOCK TRAILER

Twin axle, folding sheep decks, extra 3ft dividing gate, additional cattle gate, internal light, LED lights, spare wheel, gross cap 3500kg.

£4,350
+VAT



10" X 5" PLANT TRAILER

Aluminium floor, LED lights
floor lashing points,
max cap 3500kg.

**HAVE A CHAT WITH TOM ABOUT THE RANGE
07391407224 | TOM.EDWARDS@PALLISERS.CO.UK**



YOUR SALES TEAM



TOM AREA SALES MANAGER

Tom joined Pallisers three years ago, bringing with him valuable hands-on experience from Russell Price Farm Services, where he developed a strong foundation in agricultural work and contracting. Since then, he has become a familiar face in our parts department, known for his efficiency, product knowledge, and a real go-get it attitude when helping customers.

Now stepping into an exciting new role in sales, Tom will be leading the Nugent Trailers. He'll be your go-to for all Nugent enquiries, offering expert advice and support.

When it comes to favourites, Tom rates the Nugent LS4316 livestock trailer highly a 16-foot livestock trailer that strikes the perfect balance between strength, reliability, and ease of use. It's built to handle demanding farm work while remaining straightforward to tow and operate, making it a dependable choice for busy livestock farmers.

A dedicated family man, Tom is looking forward to the challenge ahead and building even stronger relationships with customers in his new role.

HUSQVARNA ROBOT MOWERS IN STOCK



AUTOMOWER® 315

1,500m² working area capacity, up to 40% max slope performance.

£968.33 PLUS VAT



AUTOMOWER® 315 II

1,500m² working area capacity, up to 40% max slope performance.

£1,244.35 PLUS VAT



AUTOMOWER® 405X

1,500m² working area capacity, up to 40% max slope performance.

£1,244.31 PLUS VAT



AUTOMOWER® 415X

1,500 m² working area capacity, 40% max slope performance.

£1,597.02 PLUS VAT



AUTOMOWER® 430X

3200 m² working area capacity, up to 45% max slope performance.

£1,624 PLUS VAT



AUTOMOWER® 450X

5000m² working area capacity, 45% max slope performance.

£2,378 PLUS VAT



AUTOMOWER® 520

2,400 m² working area capacity, 45% max slope performance.

£1,548.19 PLUS VAT



AUTOMOWER® 550

5000m² working area capacity, 45% max slope performance.

£2,454.50 PLUS VAT

YOUR AFTERSALES TEAM



SOPHIE

Workshop Administrator

Time with Pallisers: 13 years

Sophie has been a key part of the Pallisers team for 13 years, keeping everything running smoothly behind the scenes as our workshop administrator. From handling warranty claims to managing day-to-day workshop admin, Sophie plays a vital role in supporting both the team and our customers. Known as the “mother hen” of the workshop, she’s always on hand to keep the boys in check and ensure things stay on track.

Outside of work, Sophie is heavily involved in her family farm, working with beef cattle including Shorthorns and Herefords, as well as Polled Dorsets, Dorset Horn sheep and Blue Texel sheep.

A proud mum to her young son Jake, Sophie enjoys sharing a bit of Palliser’s life with him too, especially when it comes to climbing on tractors and making the most of the perks that come with it!

A FEW FACES ON THE TEAM



BRIAN

Service Engineer

Time with Pallisers:
23 Years



WILL

Service Engineer

Time with Pallisers:
1.5 Years



BRIAN

Service Engineer

Time with Pallisers:
32 Years
(Since the beginning)

YOUR AFTERSALES TEAM



JAMES

Parts Advisor

Time with Pallisers: 3 months

Please join us in giving a warm welcome to James, who joined our Parts Department earlier this year.

James brings with him a strong practical background, having previously worked self-employed in landscaping, construction, and groundworks. He has also spent time working across a range of farms with mixed beef, sheep, and arable enterprises, giving him a great understanding of the industry and our customers' needs.

Outside of work, James enjoys playing football at the weekends and spending time dog walking.

We're delighted to have James as part of the team, and we're sure many of you will see him in our stores over the coming months.



TENOSPIN WRAP

£72 +VAT PALLET RATE (15 ROLLS)

£74 +VAT PER ROLL



WANT TO EARN WHILE YOU LEARN? HAVE YOU CONSIDERED AN APPRENTICESHIP?

"Being on the Kubota apprenticeship scheme gives a good mix of theory and practical to support what we're learning on the job. There's a lot of knowledge and skill sharing both with the workshop team and also with others who are on the course with me. And this really helps with developing my skills." Sam.

"I always wanted to be a mechanic, and that dream started when I left school and joined Pallisers," explains 20-year old Jake.

"The course combines theory and practical experience, and with this type of learning, we also continue to get a wage when learning at college...Now I'm part of a fantastic team, where sharing information and transferring knowledge between colleagues makes troubleshooting and repairs much more fun," says Jake. "It's very much one big team where we all look out for each other."



Based at Pallisers of Hereford, each apprenticeship course includes both theory and practical sessions whilst on block release at one of the partner colleges.



INDUSTRY APPROVED QUALIFICATION



EARN WHILE YOU LEARN



INDUSTRY - LEADING TRAINING

We are always on the lookout for enthusiastic people to join our service team as an apprentice. If you are interested in earning while you learn, then email camilla.palliser@pallisers.co.uk



MARSHALL TRAILERS

As official dealers, we are proud to supply the complete lineup of Marshall Trailers. From their silage and grain trailers to robust muck spreaders and flatbeds, we have the perfect transport solution for your farm.



£22,500
+VAT



OM 14 TONNE TRAILER

14.5 tonne, 560/60 22.5 flotation tyres, air and oil brakes with load sensing, sprung draw bar, commercial axles

IN STOCK



28 FT BALE FLAT BED TRAILER

Gun metal grey, hydraulic & air Brakes, sprung drawbar, front & rear hay Ladders, strap box.

IN STOCK



MS105 MUCK SPREADER

550- 60 x 22.5 flotation wheels, hydraulic brakes, Volume: 10.5 cubic yards.

GRASS EQUIPMENT AVAILABLE NOW



NEW Fleming roll 8ft X 30

NEW Ritchie 822G Grassland Harrows

NEW Winton 1.75m Heavy duty tractor PTO Flail mower

NEW Winton 2.2m hydraulic offset tractor flail topper

NEW Fleming 5FT & 6ft grass Toppers

HUSTLER

GET YOUR HUSTLER EQUIPMENT AT PALLISERS



LX104 BALE UNROLLER
£6,225
+VAT



LM100 BALE GRAB
£1,450
+VAT

DIFFERENT CHOICES OF BRACKET AVAILABLE
5 YEARS WARRANTY.



WORKING WITH DEUTZ-FAHR



CAMILLA PALLISER & PHIL PORTMAN AT THE DEUTZ-FAHR 2026 CONFERENCE



DAVID PALLISER WITH DEUTZ-FAHR



PALLISERS TEAM AT LAMMAS SHOW 2026

This year, we celebrate 20 years since we took on the Deutz-Fahr franchise in 2006. Since then, we have grown the brand in the Hereford area, selling over XX tractors since we began. We always have a range of NEW and USED Deutz-Fahr tractors in stock, and our team has many years of expertise to help customers find the right model for their farming outfit.

CHAT DEUTZ FAHR | WITH CAMILLA PALLISER

DO YOU ENJOY WORKING WITH THE DEUTZ-FAHR TEAM?

Deutz-Fahr UK is a really good team to work with. Pallisers is a family-run business, working with Deutz gives us that same family feel. We can speak to anyone at Deutz-Fahr and they know who we are, they know our business and we have that relationship where we can get things moving pretty quickly.

WHAT DOES DEUTZ-FAHR BRING TO HEREFORD FARMERS?

The Deutz-Fahr range brings a really varied range of tractors; we have models for the fruit farmers, the arable farmers and the livestock farmers. So we aren't just committed to one small line.

WHAT ARE YOU MOST LOOKING FORWARD TO WITH DEUTZ-FAHR?

We are experiencing really positive times with the brand. They are the only UK manufacturer to grow last year in the tractor market. There are some really exciting things happening with Deutz-Fahr, which we will see in the next 18 months!
(Stay tuned!!)

DESCRIBE THE DEUTZ-FAHR BRAND IN THREE WORDS.

Progressive. Reliable and Family-Focussed for the dealers.





DEUTZ-FAHR

5 SERIES KEYLINE FROM £45,000

5105 Keyline | £45,000

105 hp 3.8 litre 4 cylinder FARMotion engine
3 spool valves
4-pillar cab, high vis. roof c/w air con.
40/40 transmission, hi-lo splitter, power shuttle with Stop&Go

5125 Keyline | £51,250

125 hp 3.8 litre 4 cylinder FARMotion engine
Spec as above, plus
Electric linkage
4 speed PTO 540/540E/1000/1000E
Double pump hydraulic system



STOCK AVAILABLE

**CONTACT OUR TEAM
ABOUT THE COMPLETE
DEUTZ-FAHR RANGE**

**CURRENT FINANCE OFFERS
ON THE DEUTZ-FAHR RANGE**

1 + 35 MONTHLY PAYMENTS @ 0%

1 + 3 ANNUAL PAYMENTS @ 0%

**(BASED ON 45% OF THE RRP) ADDITIONAL PROFILES ARE AVAILABLE*



THE MISTS OF TIME

In a bid to maintain its high standards of welfare and bio-security, Herefordshire bird producer Farmpoint has invested in an XTA air-blast trailed sprayer to carry out poultry shed disinfection for its 800,000-bird operation.

"We really wanted to be more in control of how shed sterilisation took place once the buildings had been cleaned out, and the XTA looked to be the right bit of kit for the job," explains Ed Turner, pictured. "It's really important that the products we apply are dispersed effectively and thoroughly, to ensure that pathogens are eradicated."

Supplied by Pallisers of Hereford, the XTA 3320 is an orchard-type air blast sprayer that uses a twin fan to produce an adjustable, 8-14 bar spray pressure that feeds 26 nozzles arranged in pairs.

We wanted something that was both compact, yet generous in its capacity, and offered a high degree of manoeuvrability," he says. "With its V-swivel hitch mounted to the tractor link arms, the 2,000-litre sprayer follows our L1342 Kubota tractor with a high degree of precision, which makes it very easy to thread it through the interior layout of our poultry sheds. If the tractor will drive through, so will the sprayer."

"We've never before had a sprayer that could lift the backdraft shutters on our poultry buildings, so we know the XTA produces a very effective blast of air, which is giving us a far better coating of the inside of our buildings," says Ed.

"Importantly, we no longer get puddles on the floor, because we'd rather everything was coated by a thick fog that holds the disinfectant in place for as long as possible. Dwell time is the key to disinfectant effectiveness."

The farm has also added an M7-153 which supports the cleaning process with a 2,600-gallon vacuum tanker that's used to dispose of washings, which operator Luke Williams says has surprised those who have used it. Equipped with front linkage and PTO, the tractor is also used with a front-mounted flail topper.

"The M7 is far better than expected," says Luke. "Cab and front axle suspension is really good, and I've been pleasantly surprised by the way it pulls a fully-loaded tanker."

"Adding a low-loader trailer to the fleet will simplify moving the L-series and XTA sprayer combination between our three poultry units," adds Ed.



KUBOTA XTA SPRAYERS

This speciality crop sprayer performs precision treatments. Using this optional system, the sprayer automatically regulates the air volume and adjusts the application dose according to the development stage of the crops. Optimum application ensures total control of all the crop health treatments carried out in the fields. **Enquire today.**



UPGRADE YOUR TRACTOR FOR LESS

M4003 Prices start from £36,500

3.3-litre, 4-cylinder Kubota engine

66 hp (M4-063) / 74 hp (M4-073)

2,500 kg lift capacity

63 l/min total hydraulic output

Warranty: 2 years/2000 hours (upgradeable at cost)

Finance: 0% 2+22 on 50% RRP

M5002 Prices start from £46,500

3.8-litre, 4-cylinder Kubota engine

96 hp (M5-092) / 115 hp (M5-112)

4,100 kg lift capacity

64 l/min hydraulic output

36 forward / 36 reverse transmission with hi-lo splitter

Warranty: 5 years/2000 hours (upgradeable at cost)

Finance 0% 3+33 on 50% RRP

KUBOTA GROUND CARE OFFERS

EK1-261 - Compact Tractor

Now £9,950 +VAT

GR1600 ID Mower

From £7,300 +VAT

Buy a **BX Series** and get a flail mower for just £231 +VAT



STOCK AVAILABLE

**CONTACT OUR TEAM
ABOUT THE COMPLETE
KUBOTA RANGE**





FIX YOUR FINANCE AT 0%

ON ALL MERLO AGRICULTURAL TELEHANDLERS

Upgrade your telehandler now with 0% finance valid until 31st July 2026.

Scheme	APR
1 + 2 Annual Payments*	0%
4 + 20 Monthly Payments*	0%
3 + 33 Monthly Payments*	1.99%

The maximum balance to finance will be 40% of RRP, subject to DLL terms and conditions. Retail customers only. Excludes fleet deals of three or more machines. P27.6 and TF27.6 are ONLY eligible for the 4+20 @ 0% APR scheme

FOR SALE

- NEW TF42.7CS** Boom suspn', air con, Grammer air seat, 460 radial tyres
- NEW TF42.7** Boom suspn', air con, Grammer air seat, 460 radial tyres
- NEW TF38.10 CS** Boom suspn', air con, Grammer air seat, 460 radial tyres

£POA
£POA
£POA

LOLER TESTING

A LOLER test/Thorough Examination is a detailed, statutory health check of lifting equipment. **Required by UK law** under the Lifting Operations and Lifting Equipment Regulations 1998 (LOLER), it ensures that all equipment used to lift or lower loads is safe, fit for purpose, and properly.

BOOK YOUR LOLER TEST WITH OUR SERVICE DEPARTMENT, 01432 890 300.

FROM
£185
EX TRAVEL & MILEAGE



AMAZONE



A spreader that makes your season, stress free

Our complete range is available in a wide range of specifications and price points, able to suit every farm and use case, with working widths from 10-54 metres. From our ZA-M with years of proven reliability, to our most advanced spreader, the ZA-TS with precision in a class truly of its own. Compatible with our precision farming options such as WindControl, BorderTS online weighing and radar spread pattern optimisation.

All our spreaders are compatible with the Amazone mySpreader app for quickly finding spreader settings on the go. With over 100,000 individual spreader settings in our database to date.



Manufacturer warranty against rust prevention
*available on ZA-TS and ZA-V only



**SPREADERS
IN STOCK:
ZA-V 2600
ZA-V 3200
ZA-M 2002**

YOUR SALES TEAM

AGRICULTURE



JAMIE BLANDFORD

West Herefordshire & Wales

07795 978 610

jamie.blandford@
pallisers.co.uk

Favourite Machine(s):

Merlo 33.7 & Kubota
M7-173 KVT



PHIL PORTMAN

South Herefordshire & Gloucestershire

07970 754 597

phil.portman@
pallisers.co.uk

Favourite Machine(s):

Amazone UF2002 &
Krone BiGX



NEIL LLOYD

North & East
Herefordshire &
Worcestershire

07974 949 547

neil.lloyd@
pallisers.co.uk

Favourite Machine(s):

Deutz-Fahr 6135
Kubota RTV X1110

HUSOVARNA &
NUGENT



TOM EDWARDS

Herefordshire and
surrounding Counties

07869 660584

tom.edwards@
pallisers.co.uk

Favourite Machine(s):

Nugent L4318T
Livestock Trailer

FOR INFORMATION ON ANY OF
OUR MACHINERY, PLEASE
CONTACT OUR SALES TEAM



**1 YEAR
MANUFACTURER
WARRANTY**

**0% FINANCE
AVAILABLE**

KRONE GRASS OFFERS

£18,950
+VAT



£24,750
+VAT



£9,500
+VAT



SWADRO TC 640 TWIN ROTOR RAKE SWADRO TC 760 TWIN ROTOR RAKE SWADRO S 460 SINGLE ROTOR RAKE

5.7 - 6.4 metre (manual adjustment), centre swath curtain, steering rear axle.

6.8 - 7.6 metre working width, centre curtain, steering axle.

4.60 m working width, three-point mounted.

NEW VENDRO 790

6 rotor-mounted tedder, working width ~ 7.8 m

NEW VENDRO 900

8 rotor mounted tedder, working width ~ 9 m

NEW EASY CUT R320 CV

Rear mower conditioner, ~ 3.2 m working width

NEW EASY CUT F320 CV

Front mower conditioner, ~ 3.2 m working width

NEW SWADRO S 380

Single rotor rake, working width ~ 3.8 m working width

NEW EASYCUT B880 CV

Butterfly mower conditioner ~8.8 m working width

£POA

£POA

£POA

£POA

£POA

£POA

STOCK AVAILABLE FOR IMMEDIATE DELIVERY

**0% FINANCE
AVAILABLE
ON KRONE ROUND
BALERS**

4+40 MONTHLY PAYMENTS

Flexible profiles are available on request



NEW & EX-DEMO EQUIPMENT

£45,500
+VAT



DEUTZ FAHR 5105 KEYLINE GS
105 hp, air con, high vis roof, 40F/40R - 2 speed power shift, full loader ready.

£51,250
+VAT



DEUTZ-FAHR 5125 KEYLINE
Loader ready, HML 3 Speed powershift, air con, air seat, 3.8l engine.

IN STOCK



DEUTZ FAHR 5115 D TTV
115 hp (boost to 126 hp), full CVT transmission, independent front axle suspension, front linkage and PTO, electric spools, air con, electric rear lift

IN STOCK

JAVA GREEN MODEL ALSO IN STOCK



DEUTZ FAHR 6170 RC SHIFT
170hp, 6 cylinder, 50k, Front & cab suspension, powershift transmission, front linkage 2 rear spools, dromone PUH, 2 mid mount with front linkage and service, Manual AC, Air & hydraulic brakes, 650,s

IN STOCK



KUBOTA M7-174 KVT
170 hp, KVT - full CVT (vario) transmission, Electric handbrake, Air cab suspension, ISOBUS, Autosteer ready & fast steer, front PTO, apple car play Warranty options available.

IN STOCK



KUBOTA B1-241
24hp, 3 cylinder, 4wd, narrow width under 1m.

IN STOCK



KUBOTA L1-382 HST
3 cylinder 37.HP diesel engine, HST transmission, foldable rops.

£36,500
+VAT



KUBOTA M4-063
63hp Diesel Engine, 6 Speed Fully Synchronised Transmission, Rear Hydraulic Lift, Optional Powershift, 5 Year/2,000 Hour Warranty, 2 Year 0% Finance Available

IN STOCK



EX DEMO KUBOTA M6-132
133 hp / 153 hp with boost. 45 kph, Front axle suspension, Cab suspension, 3 mechanical spool valves, LK2100 M self levelling loader, 5 year warranty / 3000 hours as standard (upgradeable to up to 6000 hours)

KUBOTA GR1600ID
KUBOTA GR1600ID
KUBOTA Z1-421
KUBOTA Z2-481

Hydrostatic, 48 Inch cutting deck, 18l fuel tank capacity
Hydrostatic, grass collector, 18l fuel tank capacity
Hydrostatic, 42 inch mowing deck, zero turn
Hydrostatic, 48 inch mowing deck, zero turn

£8,500
£7,300
£4,750
£7,000

USED EQUIPMENT

£39,950
+VAT



MASSEY FERGUSON 5712S
17 reg 3400 hours, c/w Massey Ferguson loader 946
4 cylinder, 120 hp (130 hp max), 40K, air con, power
shuttle

£58,000
+VAT



KUBOTA M6-132 & LOADER
2023, approx 1600 hours, c/w loader, 4 cylinder,
132hp (boost to 142), 45 k, Aircon, power shuttle.

£28,950
+VAT



KUBOTA M4-073
2023, 1800 hours, aircon, air seat, rear fender
extensions, auto hitch, power shuttle.

£27,500
+VAT



KUBOTA M5-111

110hp, 3 valves, power shuttle, passenger seat, radio,
air con..

£27,950
+VAT



AMAZONE UF1801 SPRAYER

2017, ISO Bus, Distance Control+ auto boom height (4
sensors), 11 section (GPS section control capable),
triple nozzle body, DUS boom recirculation, Boom
lights.

£5,950
+VAT



KVERNELAND 8076 TEDDER

2011, 6 Rotors, 7.6m meter working width, 7 tine
arms per rotor

£6,500
+VAT



KRONE KW 7.92 TEDDER

2012, working width 7.9 m, 8 rotor, manual steering.

£3,950
+VAT



KRONE SWADRO 35 RAKE

Single rotor rake, 2010.

£55,950
+VAT



MERLO TF42.7-140

70 reg - Sept 2020, 2,200 hours, air con, boom
suspension, Grammar air seat.

TRACTORS

Kubota L245

John Deere 2320

Solis 26

Massey Ferguson 6245

Deutz-Fahr Agrofarm 430

Massey Ferguson 6485

Good working order NO VAT

HST, 24.1 hp Yanmar 3-cylinder diesel engine

HST 24 reg, ~60 hours, 26 hp, double acting spool valve, 3 cylinder engine

03 reg, power shuttle, dynashift, 4500 hours, 2 spool valves

12 reg, 6500 hours, proflin, AC, 4 electric spools, twinflow, radio

2004, 5500 hours, Dynashift, front linkage, 4 spools

£3,950

£5,950

£8,800

£18,000

£19,500

£27,500

£44,950
+VAT



MERLO TF42.7CS-140

22 reg / 2020 year of manufacture, cab suspension, boom suspension, air con, pickup hitch.

£9,000
+VAT



CLAYDON 3.5M MOUNTED DIRECT DRILL

2008, good genuine drill, land wheel driven, bout markers, road lights.

£12,950
+VAT



LEMKEN JUWEL 7 5 FURROW PLOUGH

4 + 1 furrow, 2018, shear bolt, rear discs, depth / transport wheel.

GRASSKIT

KRONE 5.52 TEDDER
WINTON FLAIL TOPPER
KUHN GF5001MH TEDDER
EINBOCK GRASS HARROWS

2017, 4 rotors, working width 5.5m
2024, 1.45m
2007, 4 rotor, mounted hay tedder, 5m working width
9m grass harrows

£5,500
£1,000
£3,750
£1,950

TELEHANDLERS

MERLO P32.6
MERLO P.32.6
MERLO TF35.7

14 reg, air con, boom suspn', pick up hitch, air seat, Merlo headstock, 6900hrs
09 reg, air con, boom suspn', pick up hitch, 10,000hrs
70 reg, air con, boom suspn', pick up hitch, new tyres, 3900hrs

£23,000
£18,500
POA

SPRAYERS & CULTIVATION

AMAZONE ZA-TS 3200
AMAZONE CATROS
AMAZONE UF2002

2017, 3200 litre hopper spreader
2010, 4m plain discs, wedge ring roller
2018, 24m super-s2 boom, 2000L tank, isobus compatible,

£9,950
£11,950
DUE IN

RTV's

KUBOTA RTV X900
KUBOTA RTV X1110
KUBOTA RTV X1110
KUBOTA RTV X1110

Camo finish, 15 reg, full cab, new tyres, 3700 hours
Camo finish, full cab, bedliner, 3000 hours
Camo finish, 74 reg, full cab and heater, 1200 hours
24 reg, full cab, heater, 1400 hours

£9,250
£12,950
£17,750
£17,500

**FOR ANY INFORMATION ON MACHINES FOR SALE,
GET IN TOUCH ON THE NUMBER BELOW**

All prices +VAT unless otherwise stated. E&OE

PHIL PORTMAN: 07970 754 597 | JAMIE BLANDFORD: 07795 978 610 | NEIL LLOYD: 07974 949 547

ACORN PARK, BUSINESS PARK, YARKHILL, HEREFORD, HR1 3SX

01432 890 300



SALES@PALLISERS.CO.UK